

Since 1949
KUFO

DUST **SECO**
COLLECTORS



DUST COLLECTORS

01

WOODWORKING MACHINERY



► **UFO-40**

SPECIFICATIONS	UFO-40
Motor	1HP, 1ph, 110V. with Plug
Air Volume (CFM)	653 CFM 1100 m3/Time
Impeller Diameter	10"
Bag Capacity	2 Cu.ft.
Bag Size (dia. x depth)	21" x 22"
Connection Diameter	4" x (1)
Sound Rating @ 3ft.	50-55 dB (A)
Static Pressure (inch of water)	5"
Assembly Size	18" x 16" x 17"
Packing Size	17" x 15" x 16"
Net / Gross Weight	44 / 46 lbs



► **UFO-70F**

SPECIFICATIONS	UFO-70F
Motor	1HP, 1ph, 110 / 220 (prewired 110)
Air Volume (CFM)	696 CFM 1200 m3/time
Impeller Diameter	10"
Bag Capacity	2.5 Cu.ft.
Bag Size (dia. x depth)	14" x 32" (top), 14" x 23" (bottom)
Connection Diameter	4" x (1)
Sound Rating @ 3ft.	55-65 dB (A)
Static Pressure (inch of water)	5.51"
Assembly Size	33" x 16" x 78"
Packing Size	30" x 15" x 18"
Net / Gross Weight	66 / 70 lbs
Optional Canister Filter	1 Micron @ 26" Height x 1



► **UFO-90**

SPECIFICATIONS	UFO-90
Motor	1HP, 1ph, 110V. with Plug
Air Volume (CFM)	696 CFM 1200 m3/time
Impeller Diameter	10"
Bag Capacity	2.5 Cu.ft.
Bag Size (dia. x depth)	14" x 23" (2)
Connection Diameter	4" x (1)
Sound Rating @ 3ft.	55-65 dB (A)
Static Pressure (inch of water)	5"
Assembly Size	33" x 16" x 69"
Packing Size	30" x 15" x 18"
Net / Gross Weight	65 / 70 lbs
Optional Canister Filter	1 Micron @ 26" Height x 1



DUST COLLECTORS



WOODWORKING MACHINERY

► **UFO-101**

SPECIFICATIONS	UFO-101
Motor	2HP
UFO-101M	1ph, 110V. with Plug
UFO-101UL	1ph, 240V. UL
UFO-1013	3ph, 220 / 440 (prewired 220V)
Air Volume (CFM)	1312 CFM 2200 m3/time
Impeller Diameter	12"
Bag capacity	5.2 Cu.ft.
Bag size (dia. x length)	19-1/2" x 31" (2)
Connection Diameter	5" Inlet, 4" x (2) Y fitting
Sound Rating @ 3ft.	65-75 dB (A)
Static pressure (inch of water)	7.82"
Assembly Size	42" x 22" x 79"
Packing Size	36" x 23" x 23"
Net / Gross weight	140 / 150 lbs
Optional Canister Filter	1 Micron @ 26" Height x 1



► **UFO-101D**

SPECIFICATIONS	UFO-101D
Motor	2HP
UFO-101D	1ph, 220V.
UFO-101D3	3ph, 220 / 440 (prewired 220V)
Air Volume (CFM)	1312 CFM 2200 m3/time
Impeller Diameter	12"
Bag capacity	5.2 Cu.ft.
Bag size (dia. x length)	19-1/2" x 31" (2)
Connection Diameter	5" Inlet, 4" x (2) Y fitting
Sound Rating @ 3ft.	65-75 dB (A)
Static pressure (inch of water)	7.82"
Assembly Size	42" x 22" x 79"
Packing Size	36" x 23" x 23"
Net / Gross weight	140 / 150 lbs
Optional Canister Filter	1 Micron @ 26" Height x 1



► **UFO-102A / UFO-103A**

SPECIFICATIONS	UFO-102A	UFO-103A
Motor	2.2 kw (3 HP)	3.75 kw (5 HP)
Inlet Siameter	6" x 1 4" x 3	7" x 1 4" x 4 (Standard) 5" x 2 (Optional)
Air Volume	3270 m3/time CFM	2733 CFM 4650 m3/time
Bag Volume	5.2 ft^3	10.5 ft^3
Static Pressure Of Water	9.26"	10.55"
Packing (Wooden Case)	45" x 26" x 28"	47" x 30" x 31"
Net Weight	68 kg (151 lbs)	102 kg (253 lbs)
Gross Weight	78 kg (172 lbs)	150 kg (363 lbs)





DUST COLLECTORS

03

WOODWORKING MACHINERY



► **UFO-102B**

SPECIFICATIONS

UFO-102B

Motor	3HP, 1ph, 240V. UL
	3HP, 3ph, 220 / 440 (prewired 220V)
Air Volume (CFM)	1925 CFM 3270 m3/time
Impeller Diameter	13"
Bag Capacity	10.4 Cu.ft.
Bag Size (dia. x length)	19-1/2-" x 31" (4)
Connection Diameter	6" Inlet, 4" x (3) Y fitting
Sound Rating @ 3ft.	55-65 dB (A)
Static Pressure (inch of water)	9.26"
Assembly Size	57" x 22" x 79"
Packing Size	48" x 23" x 23"
Net / Gross Weight	170 / 180 lbs
Optional Canister Filter	1 Micron @ 26" Height x 2

► **UFO-103B**

SPECIFICATIONS

UFO-103B

Motor	5HP, 1ph, 220V.
	5HP, 3ph, 220 / 440 (prewired 220V)
Air Volume (CFM)	2733 CFM 4650 m3/time
Impeller Diameter	14"
Bag Capacity	20.9 Cu.ft.
Bag Size (dia. x length)	24" x 36" (4)
Connection Diameter	7" Inlet, 4" x (4) Y fitting
	Optional 5" x (2) Y fitting
Sound Rating @ 3ft.	70-80 dB(A)
Static Pressure (inch of water)	10.36"
Assembly Size	71" x 28" x 95"
Packing Size	57" x 30" x 32"
Net / Gross Weight	260 / 365 lbs
Optional Canister Filter	N/A

► **UFO-103H**

SPECIFICATIONS

UFO-103H

Motor	5HP, 1ph, 220V.
	5HP, 3ph, 220 / 440 (prewired 220V)
Air Volume (CFM)	3125 CFM 5300 m3/time
Impeller Diameter	14"
Bag capacity	28 Cu.ft.
Bag size (dia. X height)	19-1/2" x 48" Top (3)
	19" x 31" Bottom (3)
Connection Inlet Diameter	7" Inlet, 4" x (4) Y fitting
	Optional 5" x (2) Y fitting
Sound Rating @ 3ft.	70-80 dB(A)
Static pressure (inch of water)	10.55"
Assembly Size (L x D x H)	60" x 26" x 96"
Packing Size	60" x 30" x 26"
Net / Gross Weight	265 / 380 lbs
Optional Canister Filter	1 Micron @ 40" Height x 3





► **UFO-102T**

SPECIFICATIONS	UFO-102T
Motor	3HP, 1ph, 220V. 3HP, 3ph, 220 / 440 (prewired 220V)
Air Volume (CFM)	1925 CFM 3270 m3/time
Impeller Diameter	13"
Bag Capacity	10.4 Cu.ft.
Bag Size (dia. x length)	19-1/2" x 31" (4)
Connection Diameter	6" Inlet, 4" x (3) Y fitting
Sound Rating @ 3ft.	55-65 dB (A)
Static Pressure (inch of water)	9.26"
Assembly Size (L x D x H)	57" x 19-1/2" x 79"
Packing Size (2)	42" x 28" x 25" (1) 215 lbs 58" x 20" x 2" (1) 25 lbs
Net / Gross Weight	220 / 240 lbs
Optional Canister Filter	1 Micron @ 26" Height x 2



► **UFO-103T**

SPECIFICATIONS	UFO-103T
Motor	5HP, 3ph 220 / 440 (prewired 220V)
Air Volume (CFM)	2733 CFM 4650 m3/time
Impeller Diameter	14"
Bag Capacity	20.9 Cu.ft.
Bag Size (dia. x length)	24" x 36" (4)
Connection Diameter	7" Inlet, 4" x (4) Y fitting Optional 5" x (2) Y fitting
Sound Rating @ 3ft.	70-80 dB(A)
Static Pressure (inch of water)	10.36"
Assembly Size (L x D x H)	78" x 30" x 95"
Packing Size (2)	57" x 30" x 32"
Net / Gross Weight	260 / 365 lbs
Optional Canister Filter	N/A

► **UFO-104D / UFO-105D**

SPECIFICATIONS	UFO-105D	UFO-104D
Motor	7.5HP, 3ph, 220 / 440 (prewired 220V)	10HP, 3ph, 220 / 440 (prewired 220V)
Air Volume (CFM)	3812 CFM 6500 m3/time	4657 CFM 7200 m3/time
Impeller Diameter	17"	17-1/2"
Bag Capacity	48 Cu.ft.	58 Cu.ft.
Bag Size (dia. x height)	19-1/2" x 48" Top (4), 19-1/2" x 48" Bottom (4)	26-1/2" x 64" Top (4), 26-1/2" x 64" Bottom (4)
Connection Inlet Diameter	8-1/2" Inlet, 4" x 5 Y fitting	8-5/8" Inlet, 4" x 5 Y fitting
Sound Rating @ 3ft.	75-85 dB(A)	80-90 dB(A)
Static Pressure (inch of water)	12.25"	14"
Assembly Size (L x D x H)	58" x 50" x 122"	65" x 63" x 122"
Packing Size	61" x 52" x 35"	67" x 69" x 34"
Net / Gross Weight	680 / 800 lbs	730 / 1080 lbs
Optional Canister Filter	1 Micron @ 40" Height x 4	N/A





C-MODELS: 1 MICRON CANISTER FILTER DUST COLLECTOR

05

WOODWORKING MACHINERY

CLEANER AIR AND WORKING ENVIRONMENT

With filter canister of only 1 micron, there is no more fine dust blowing out and collecting around your working area. It also reduces your chance of inhaling these fine toxic dusts unintentionally during working.

COLLECTION BAG

Most dust collectors require a cloth bag to collect saw dust in order to keep the air flow adequate. Using a plastic bag would choke the machine.

With KUFO's large filtering area, air can pass through the filtering material and prevent the plastic filtering bag from hindering the dust collector's performance.



► UFO-70FC

SPECIFICATIONS

UFO-70FC

Motor	1HP, 1ph, 110 / 220 (prewired 110)
Air Volume (CFM)	696 CFM 1200 m3/time
Impeller Diameter	10"
Bag Capacity	2.5 Cu.ft.
Canister Filter Size	13-1/2" x 26" (1)
Lower Bag Size (dia. x length)	14" x 23"
Connection Diameter	4" x (1)
Sound Rating @ 3ft.	55-65 dB (A)
Static Pressure (inch of water)	5.51"
Assembly Size	33" x 16" x 72"
Packing Size (2)	30" x 15" x 18" (70 lbs) 18" x 14" x 14" (30 lbs)
Net / Gross Weight	92 / 100 lbs



► UFO-90C

SPECIFICATIONS

UFO-90C

Motor	1HP, 1ph, 110V. with Plug
Air Volume (CFM)	696 CFM 1200 m3/time
Impeller Diameter	10"
Bag Capacity	2.5 Cu.ft.
Canister Filter Size	13-1/2" x 26" (1)
Bottom Bag Size (dia. x length)	14" x 23" (1) Plastic
Connection Inlet Diameter	4" x (1)
Sound Rating @ 3ft.	55-65 dB (A)
Static Pressure (inch of water)	5"
Assembly Size	33" x 16" x 72"
Packing Size (2)	30" x 15" x 18" (70 lbs) 18" x 14" x 14" (30 lbs)
Net / Gross Weight	90 / 100 lbs



► UFO-101DC

SPECIFICATIONS

UFO-101DC

Motor	2HP
UFO-101DC	1ph, 220V.
UFO-101DC3	3ph, 220 / 440 (prewired 220V)
Air Volume (CFM)	1312 CFM 2200 m3/time
Impeller Diameter	12"
Bag Capacity	5.2 Cu.ft.
Canister Filter Size	19-1/2" x 26" (1)
Filter Folding Size	1" depth x 125 folds
Filter Material	1 micron Polyester
Filtering Area	14320 sq.in.
Bottom Bag (dia. x length)	19-1/2-" x 31" (1) Plastic
Connection Diameter	5" Inlet, 4" x (2) Y fitting
Sound Rating @ 3ft.	65-75 dB (A)
Static Pressure (inch of water)	7.82"
Assembly Size	42" x 22" x 76"
Packing Size (2)	36" x 23" x 23" : 150 lbs 32" x 21" x 21" : 35 lbs
Net / Gross Weight	170 / 185 lbs

EASY FILTER CLEANING

With standard filter bags one needs to remove the bag and turn it inside out to clean thoroughly, causing fine dust particles to be sent airborne in the process.

With the canister filter, you simply turn the handle on top, rotating a cleaning flapper brush inside the canister to clean the filter. This shakes and brushes the dust from the filter letting it fall directly into the collection bag thus avoiding any dust particles from being sent airborne.

► UFO-102BC

SPECIFICATIONS	UFO-102BC
Motor	3HP, 1ph, 240V. UL 3HP, 3ph, 220 / 440 (prewired 220V)
Air Volume (CFM)	1925 CFM 3270 m3/time
Impeller Diameter	13"
Lower Bag Capacity	10.4 cu.ft.
Canister Filter Size	19-1/2" x 26" (2)
Filter Folding Size	1" depth x 125 folds
Filter Material	1 micron Polyester
Filtering Area	14320 sq.in. x (2)
Bottom Bag (dia. x length)	19-1/2-" x 31" (2) Plastic
Connection Inlet Diameter	6" Inlet, 4" x (3) Y fitting
Sound Rating @ 3ft.	55-65 dB (A)
Static Pressure (inch of water)	9.26"
Assembly Size	57" x 22" x 76"
Packing Size (3)	48" x 23" x 23" (1) 180 lbs 32" x 21" x 21" (2) 35 lbs each
Net / Gross Weight	230 / 250 lbs



► UFO-102TC

SPECIFICATIONS	UFO-102TC
Motor	3HP, 1ph, 220V. 3HP, 3ph, 220 / 440 (prewired 220V)
Air Volume (CFM)	1925 CFM 3270 m3/time
Impeller Diameter	13"
Lower Bag capacity	10.4 cu.ft.
Canister Filter Size	19-1/2" x 26" (2)
Filter Folding Size	1" depth x 125 folds
Filter Material	1 micron Polyester
Filtering Area	14320 sq.in. x (2)
Bottom Bag (dia. x length)	19-1/2-" x 31" (2) Plastic
Connection Inlet Diameter	6" Inlet, 4" x (3) Y fitting
Sound Rating @ 3ft.	55-65 dB (A)
Static Pressure (inch of water)	9.26"
Assembly Size (L x D x H)	57" x 19-1/2" x 76"
Packing Size (4)	42" x 28" x 25" (1) 215 lbs 58" x 20" x 2" (1) 25 lbs 32" x 21" x 21" (2) 35 lbs each
Net / Gross Weight	280 / 310 lbs



► UFO-103HC

SPECIFICATIONS	UFO-103HC
Motor	5HP, 1ph, 220V. 5HP, 3ph 220 / 440 (prewired 220V)
Air Volume (CFM)	3125 CFM 5300 m3/time
Impeller Diameter	14"
Lower Bag Capacity	28 Cu.ft.
Canister Filter Size (D x H)	19-1/2" x 39-1/2" (3), Optional : 26" height Canister
Filter Folding Size	1" depth x 125 folds
Filter Material	1 micron Polyester
Filtering Area	19093 sq.in. x (3)
Bottom Bag (dia. x length)	19-1/2-" x 31" (3) Plastic
Connection Inlet Diameter	7" Inlet, 4" x (4) Y fitting, Optional 5" x (2) Y fitting
Sound Rating @ 3ft.	70-80 dB(A)
Static Pressure (inch of water)	12"
Assembly Size (L x D x H)	60" x 26" x 89"
Packing Size (4)	60" x 30" x 26" (1) 380 lbs 43" x 21" x 21" (3) 58 lbs each
Net / Gross Weight	420 / 554 lbs



C-MODELS: 1 MICRON CANISTER
FILTER DUST COLLECTOR

06

WOODWORKING MACHINERY



C-MODEL S:1 MICRON CANISTER
FILTER DUST COLLECTOR

07

WOODWORKING MACHINERY



► UFO-105DC

SPECIFICATIONS	UFO-105DC
Motor	7.5HP, 3ph, 220 / 440 (prewired 220V)
Air Volume (CFM)	4980 CFM 8500 m3/time
Impeller Diameter	17"
Lower Bag Capacity	48 cu.ft.
Canister Filter Size (D x H)	19-1/2" x 39-1/2" (4)
Filter Folding Size	1" depth x 125 folds
Filter Material	1 micron Polyester
Filtering Area	19093 sq.in. x (4)
Bottom Bag (dia. x length)	19-1/2" x 31" (4) Plastic
Connection Inlet Diameter	8-1/2" Inlet, 4" x 5 Y fitting
Sound Rating @ 3ft.	75-85 dB(A)
Static Pressure (inch of water)	13.81"
Assembly Size (L x D x H)	58" x 50" x 180"
Packing Size (4)	61" x 52" x 35" (1) 800 lbs 43" x 21" x 21" (3) 58 lbs each
Net / Gross Weight	880 / 1035 lbs

► UFO-104H1

SPECIFICATIONS	UFO-104H1
Motor	10HP, 3ph, 220 / 440, 24A / 12A (prewired 220V)
Air Volume (CFM)	6,388CFM 10860 m3/time
Impeller Diameter	17-1/2"
Bag Capacity	29.75 Cu.ft.
Bag Size (dia. x height)	13-3/4" x 78-3/4" Top (8), 26" x 48" Bottom (2)
Connection Inlet Diameter	9-1/2" Inlet, 5" x 6 Y fitting
Sound Rating @ 3ft.	80-90 dB(A)
Static Pressure (inch of water)	18.25"
Assembly Size (L x D x H)	91" x 32-1/4" x 135"
Packing Size	88-1/2" x 39-3/4" x 30-1/4"
Net / Gross Weight	600 / 730 lbs
Optional Canister Filter	1 Micron @ 48" Height x 8

► UFO-105H1

SPECIFICATIONS	UFO-105H1
Motor	7.5HP, 3ph, 220 / 440, 20A / 10A (prewired 220V)
Air Volume (CFM)	4,000 CFM 6800 m3/time
Impeller Diameter	17"
Bag Capacity	24-1/2 Cu.ft.
Bag Size (dia. x height)	13-3/4" x 78-3/4" Top (8), 26" x 40" Bottom (2)
Connection Inlet Diameter	8-5/8" Inlet, 4" x 5 Y fitting
Sound Rating @ 3ft.	75-85 dB(A)
Static Pressure (inch of water)	15.25"
Assembly Size (L x D x H)	91" x 32-1/4" x 126"
Packing Size	83" x 39-3/4" x 30-1/4"
Net / Gross Weight	550 / 680 lbs
Optional Canister Filter	1 Micron @ 40" Height x 8





► **UFO-104H2**

SPECIFICATIONS	UFO-104H2
Motor	10HP, 3ph, 220 / 440, 24A / 12A (prewired 220V)
Air Volume (CFM)	6,627 CFM 11300 m3/time
Impeller Diameter	17-1/2"
Bag Capacity	59.49 Cu.ft.
Bag Size (dia. x height)	13-3/4" x 78-3/4" Top (16), 26" x 48" Bottom (4)
Connection Inlet Diameter	9-1/2" Inlet, 5" x 6 Y fitting
Sound Rating @ 3ft.	80-90 dB(A)
Static Pressure (inch of water)	19"
Assembly Size (L x D x H)	155" x 32-1/4" x 135"
Packing Size	88-1/2" x 39-3/4" x 44-1/4"
Net / Gross Weight	800 / 1,010 lbs
Optional Canister Filter	1 Micron @ 48" Height x 8

► **UFO-105H2**

SPECIFICATIONS	UFO-105H2
Motor	7.5HP, 3ph, 220 / 440, 20A / 10A (prewired 220V)
Air Volume (CFM)	4,312 CFM
Impeller Diameter	17"
Bag Capacity	49 Cu.ft.
Bag Size (dia. x height)	13-3/4" x 78-3/4" Top (16), 26" x 40" Bottom (2)
Connection Inlet Diameter	10" Inlet, 4" x (6) Y fitting Optional 5" x (5) Y fitting
Sound Rating @ 3ft.	75-85 dB(A)
Static Pressure (inch of water)	16"
Assembly Size (L x D x H)	155" x 32-1/4" x 135"
Packing Size	83" x 39-3/4" x 44-1/4"
Net / Gross Weight	750 / 950 lbs
Optional Canister Filter	1 Micron @ 40" Height x 16



INDUSTRIAL SUPER VAC. SERIES
DUST COLLECTOR



PORTABLE CYCLONIC DUST COLLECTOR

09

WOODWORKING MACHINERY

AS QUITE AS 53DB(A) RATING FOR AN INDUSTRIAL GRADE COLLECTOR

FEATURES

- Designed for all types of fine dry dust when working with materials not limited to just wood dust, but also Corian or MDF, Fiber Glass etc. which produce large quantities of highly toxic abrasive particulate matter.
- Industries: Woodworking, Food Processing, Pharmaceutical, Machining etc.
- Application: Wood Dust, Sugar / Flour Dust, Metal Dust, Plastic etc.
- Reduces toxic hazardous dust in the air at workplace.
- Cyclonic separation advantage – Fine Dust will be filtered through the filter area on the top and the heavier chips and dust particles fall into the collection drum and never reach the impeller. It reduces the high probable chance of having fine or abrasive particles to eat up the motor bearing and heavier chips break the impeller fan.
- A built in brush designed to quickly and efficiently clean the interior of the cartridge.
- Pleated filter and plastic dust bag protected by metal tank.
- The plastic dust bag can easily be removed by opening and tilting the filter housing.
- Built-In pressure tube lets you use the plastic bag in the drum without worrying that it will get sucked into the cyclone.
- See through glass for checking the dust level in the dust bag.
- Cleaning filter by turning the brush inside the filter housing.



Magnetic switch and vacuum gauge.



"Y" Fitting for connecting more machines.



Opening the filter housing for removing dust bag.



Opening the filter housing for removing dust bag.



See through glass for checking dust level.



Blower

► UFO-DC102 / UFO-DC103 / UFO-DC105

SPECIFICATIONS	UFO-DC102	UFO-DC103	UFO-DC105
Motor	2HP, 1ph, 220V. 2HP, 3ph, 220 / 440	3HP, 1ph, 220V. 3HP, 3ph, 220 / 440V	5HP, 3ph, 220 / 440V
Air Volume (CFM)	1312 CFM	1356 CFM	1995 CFM
Impeller Diameter	12"	14"	16"
Smallest Particle Filtered	0.03 micron	0.03 micron	0.03 micron
Filtering Area	8055 Sq.In.	10740 Sq.In.	14320 Sq.In.
Bag Volume	25 Gallon	33 Gallon	48 Gallon
Inlet Diameter	4"	5" Inlet, 4" Y fitting x (2)	6" Inlet, 4" Y fitting x (3)
Sound Rating @ 3ft.	53 dB (A)	67 dB (A)	82 dB (A)
Static Pressure (inch of water)	5.86"	7.26"	10.72"
Overall Dimension	49" x 21" x 60"	49" x 21" x 64"	55" x 25" x 69"
Net / Gross Weight	210 / 220 lbs	255 / 265 lbs	300 / 325 lbs

ECONOMICAL PORTABLE CYCLONIC DUST COLLECTOR

FEATURES

- Designed for all types of fine dry dust when working with materials not limited to just wood dust, but also Corian or MDF, Fiber Glass etc. which produce large quantities of highly toxic abrasive particulate matter.
- Industries: Woodworking, Food Processing, Pharmaceutical, Machining etc.
- Application: Wood Dust, Sugar / Flour Dust, Metal Dust, Plastic etc.
- Reduces toxic hazardous dust in the air at workplace.
- Cyclonic separation advantage – Fine Dust will be filtered through the filter area on the top and the heavier chips and dust particles fall into the collection drum. It minimizes the high probable chance of having fine or abrasive particles to damage the motor and heavier chips break the impeller fan.
- See through glass for checking the dust level in the dust bag.

► UFO-102THC

SPECIFICATIONS	UFO-102THC
Motor	3HP, 1ph, 220V. 3HP, 3ph, 220 / 440 (prewired 220)
Air Volume (CFM)	2231 CFM
Impeller Diameter	13"
Collecting Drum Capacity	1.3 Gallon Steel Drum (2)
Canister Filter Size	13" x 17" (2)
Filter Folding Size	1" depth x 125 folds
Filter Material	1 micron Polyester
Filtering Area	674 sq.in. x (2)
Connection Inlet Diameter	6" Inlet, 4" x (3) Y fitting
Sound Rating @ 3ft.	60-65 dB (A)
Static Pressure (inch of water)	9.26"
Assembly Size (L x D x H)	53.5" x 22" x 61"
Packing Size	61" x 30" x 35.4"
Net / Gross Weight	235lbs / 326lbs



PORTABLE CYCLONIC DUST
COLLECTOR

10

WOODWORKING MACHINERY



TWO STAGE DUST CYCLONE

WOODWORKING MACHINERY

FEATURES

- A cyclone separated the bulky wood waste from the air stream as it enters the dust collection system.
- It is much safer which the cyclone remotes potentially destructive objects before they can enter the impeller.
- A cyclone is more efficient because it consolidates saw dust into an easy to empty container and the airflow won't restricted by filter clogging.
- The quick and smart handle for pulling out collecting drum easily with only one person operating.
- With the 5 micron Filter Bag, it captures 74% of fine dust sending airborne.
- With the Canister Filter type, it captures 99.9% of test material from 1 micron.



► SK-23SDC / SK-25SDC (3HP / 5HP) WITH 5 MICRON FILTER BAG(S)

SPECIFICATIONS	SK-23SDC	SK-25SDC
Motor	3HP / 60 Hz	5HP / 60 Hz
Air Suction Capacity W/O Bag	2000 CFM	2500 CFM
Max. Static Pressure	13 InH ₂ O	16 InH ₂ O
Inlet Diameter	8" x 4" x 3	10" x 4" x 4
Bag Diameter	19-5/8"	23-5/8"
Number Of Drum Needed	1	1
Drum Size	60 gallon	60 gallon
Sound Rating (noise) @ 3M	75-85 dB	75-85 dB
Over Size (L x W x H)	67" x 45-1/4" x 90-1/2"	71" x 51-1/4" x 118"
Packing Size (L x W x H)	33-1/4" x 32" x 49-1/2"	35-1/2" x 31-1/4" x 60-1/4"
N.W. / G.W. / Cuft	205 / 254 lbs / 31'	295 / 405 lbs / 39'



OPTIONAL
● Remote control



INSIDE FRAME (PE BAG HOLDER)
● Make dust disposal quick and easy.
● Heavy-duty bags simply lift out of the drum; there is no mess dumping.



QUICK LIFT LEVER
● Quick and smart device for pulling out the steel drum which one person can be done easily.



AUTO CLEANING CANISTER

- This canister is equipped with 1 micron filter and it goes 30 second forward and 30 second reverse direction for auto cleaning when machinery turn off.

► SK-23SECO (3HP) WITH 1 MICRON CANISTER FILTER(S)

SPECIFICATIONS	SK-23SECO
Motor	3HP / 60 Hz
Air Suction Capacity W/O Bag	2100 CFM
Max. Static Pressure	13 InH ₂ O
Inlet Diameter	8" x 4" x 3
Bag Diameter	19-5/8"
Drum Size	60 gallon
Sound Rating (noise) @ 3M	75-85 dB
Over Size (L x W x H)	67" x 45-1/4" x 90-1/2"
Packing Size (L x W x H)	33-1/4" x 32" x 49-1/2"
N.W. / G.W. / Cuft	270 / 320 lbs / 31'

► **SK-25SECO (5HP)
WITH 1 MICRON CANISTER FILTER(S)**

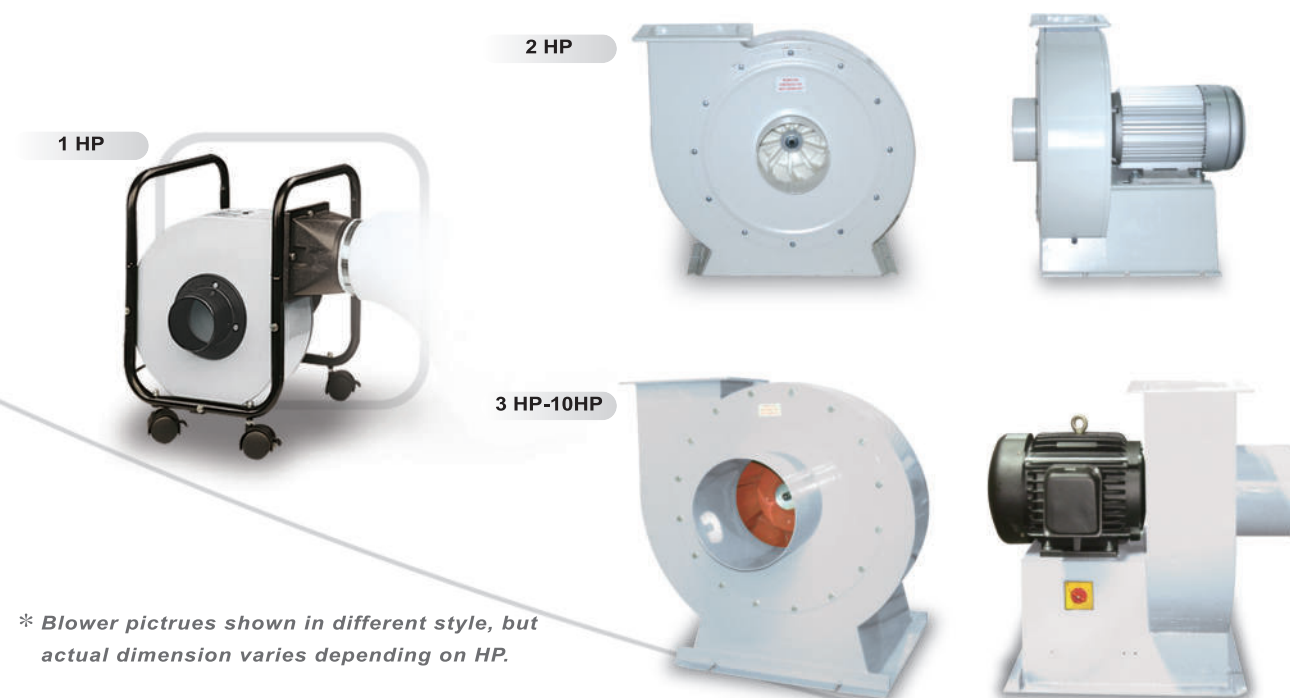
SPECIFICATIONS	SK-25SECO
Motor	5HP / 60 Hz
Air Suction Capacity W/O Bag	2500 CFM
Max. Static Pressure	16 InH ₂ O
Inlet Diameter	10" x 4" x 4
Bag Diameter	23-5/8"
Drum Size	60 gallon
Sound Rating (noise) @ 3M	75-85 dB
Over Size (L x W x H)	71" x 51-1/4" x 118"
Packing Size (L x W x H)	35-1/2" x 31-1/4" x 60-1/4"
N.W. / G.W. / Cuft	430 / 540 lbs / 56'



BLOWER UNIT (1-10 HP) Larger unit(s) are available upon request.

► **DC40BL / DC101BL / DC102BL / DC103BL / DC104BL / DC105BL**

SPECIFICATIONS	DC40BL	DC101BL	DC102BL	DC103BL	DC105BL	DC104BL
Motor	1 HP	2 HP	3 HP	5 HP	7.5 HP	10 HP
Air Volume (CFM)	653 CFM	1312 CFM	2431 CFM	3433 CFM	4980 CFM	5688 CFM
Impeller Diameter	10"	12"	13"	14"	17"	17"
Inlet Diameter	4"	5"	6"	7"	9-1/2"	10"
Sound Rating @ 3ft.	50-55 dB (A)	65-75 dB (A)	55-65 dB(A)	70-80 dB (A)	75-85 dB(A)	80-90 dB(A)
Net Weight	33 lbs	56 lbs	68 lbs	102 lbs	205 lbs	238 lbs



* Blower pictures shown in different style, but actual dimension varies depending on HP.



DUST COLLECTORS ACC.

13

WOODWORKING MACHINERY

COST EFFECTIVE AND UPGRADE YOUR EXISTING UNIT

The price of buying only 5-micron traditional filter bag would be almost equal to the cost of these units. You can purchase just the cartridge kit, which includes plastic bottom collecting bag and extra canister holding strap to upgrade your existing units of UFO-90, UFO-101, UFO-102B, UFO-103H and UFO-105D. By using the canister filter, you get superior dust filtration, a clear, throwaway collection bag, much larger filtering surface area, and a filter that is easier to clean.



► DC-13C

SPECIFICATIONS	DC-13C
Cartridge Diameter	13-1/2"
Height	26"
Filter Paper	1"depth x 125 folds
Composition	Polyester
Filtering Area	11,456 sq.inch
Smallest Particle Filtered	1 micron
Model Use (# of Canister Used)	UFO-70F (1)
	UFO-90 (1)

CANISTER FILTER UPGRADE KIT INCLUDES

- Cartridge Filter
- Plastic bottom collecting bag
- Metal bag strap



DC-19C & DC-19CL Canisters feature in Built-In full length Brush cleaner. Simply turn the handle on the top back and forth to remove the fine dust caked onto the filter. In just few movements, the dust collectors are back to full performance capacity.

► DC-19C / DC-19CL

SPECIFICATIONS	DC-19C	DC-19CL
Cartridge Diameter	19-1/2"	19-1/2"
Height	26"	40"
Filter Paper	1"depth x 125 folds	1"depth x 125 folds
Composition	Polyester	Polyester
Filtering Area	14,320 sq. in.	19,093 sq.inch
Smallest Particle Filtered	1 micron	1 micron
Model Use (# of Canister Used)	UFO-101 (1)	
	UFO102B (2)	UFO-103H (3)
	UFO-103H (3)	UFO-105D (4)
	UFO-105D (4)	

Hose Clamps

- SK-1025CL 2.5" clamp (2"Hose)
- SK-1020CL 3" clamp (2.5"Hose)
- SK-1021CL 3.5" clamp (3"Hose)
- SK-1022CL 4.5" clamp (4"Hose)
- SK-1023CL 5.5" clamp (5"Hose)
- SK-1024CL 6.5" clamp (6"Hose)



Flexible Hose (max. length/30m(100ft))

- SK-300H 75 mm (3")
- SK-500H 125 mm (5")
- SK-400H 100 mm (4")
- SK-600H 150 mm (6")



► **Elbow**

SK-1016EL 75 mm (3")
 SK-1017EL 100 mm (4")



► **Reducer**

SK-1011RE
 100 x 75 mm (4" x 3")
 SK-1024RE
 75 x 50 mm (3" x 2")
 SK-1027RE
 125 x 100 mm (5" x 4")
 SK-1032RE
 100 x 50 mm (4" x 2")



► **Splice**

SK-1018SP 75 mm (3")
 SK-1019SP 100 mm (4")



► **Tee**

SK-1013T 100 mm (4")
 SK-1012T 75 mm (3")



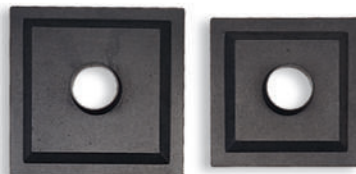
► **Y Fitting**

SK-1015Y 100 mm (4")
 SK-1014Y 75 mm (3")



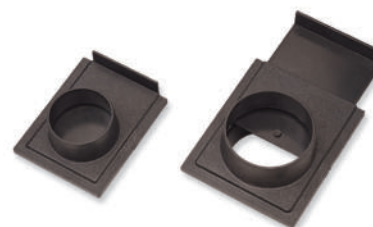
► **Table Saw Dust Hood**

SK-1005DH
 Ø100 x 360 x 360 mm
 (Ø4" x 14" x 14")
 SK-1004DH
 Ø100 x 300 x 300 mm
 (Ø4" x 12" x 12")



► **Floor Sweep**

SK-1003FS
 Ø100 x 540 mm (Ø4" x 21")



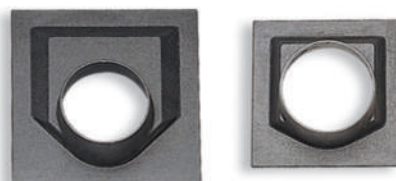
► **Universal Dust Hood**

SK-1010DH
 Ø100 x 160 x 160 mm
 (Ø4" x 6" x 6")



► **Jointer Dust Hood**

SK-1002DH
 Ø100 x 215 x 260 mm
 (Ø4" x 10-1/4" x 8-1/2")
 SK-1001DH
 Ø100 x 210 x 210 mm
 (Ø4" x 8-1/4")



► **Plastic Blast Gate**

SK-1006BG 75 mm (3")
 SK-1007BG 100 mm (4")
 SK-1008BG 125 mm (5")
 SK-1009BG 150 mm (6")



WE RESERVE THE RIGHT TO MODIFY DESIGN WITHOUT PRIOR NOTICE.