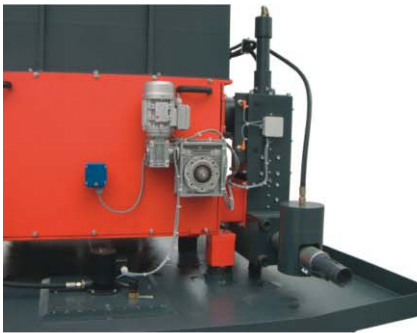
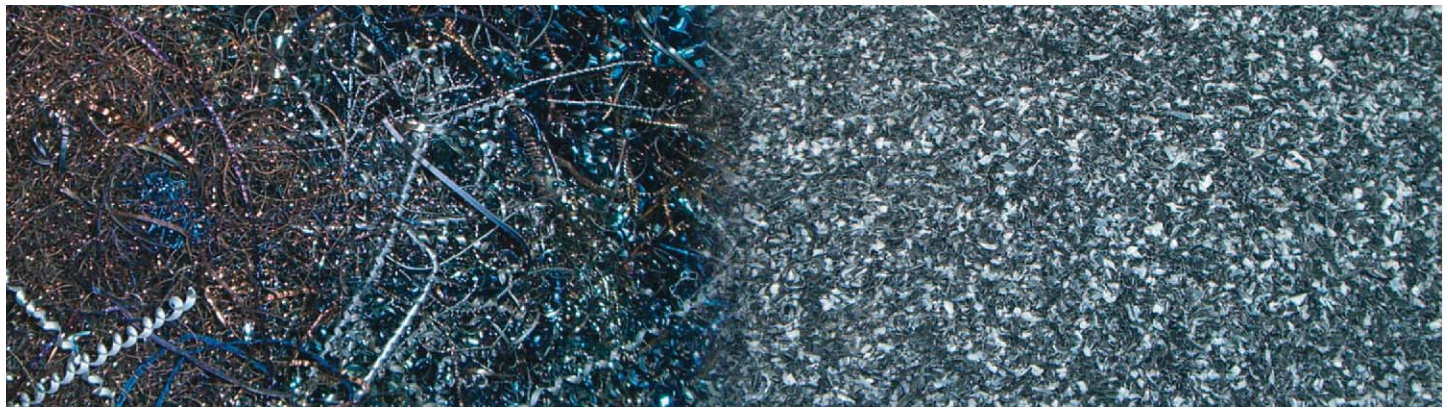




Shredding and briquetting
of light metals
Combi-Press WTH series

Single-shaft shredder with briquetting unit: **WTH**



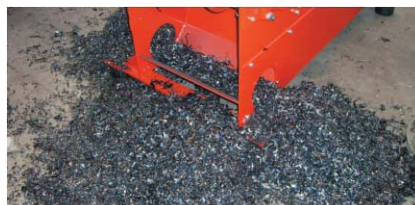
Controlled supply of material



WTH 600/1000

The combination of a type WLM 500 or WLM 1000 single-shaft shredder and a type TH-AL 500, 600 or TH-AL 800 compaction unit processes shavings created in the aluminium machining process and forms them into briquettes. The material will be shredded to a defined size through the rotor. After that, a screw conveyor feeds the material into

the compaction unit, where it is pressed into briquettes. In the process, the special cooling lubricant used in machining work that sticks to the shavings – mineral or synthetic oil-based emulsions – is pressed out, leaving residual moisture of less than 5% by weight, and can be recycled.



Economical shredder technology – offering reliability and high performance

Material is fed into the unit through a hopper. Rotor and stator blades shred the material and expel it through a screen below the rotor. The throughput rate, depending on grain size and material, is up to 3 m³/h.

The square, reversible knives are concave and have an edge length of 30 mm. The perforation diameter of the screens used is 20-30 mm.



Hydraulic unit for the press including oil cooling

Customized hopper design possible

Safe drive system with V-belts



Catch basin for lubricant

Drive for screw-conveyor



WTH 500/500



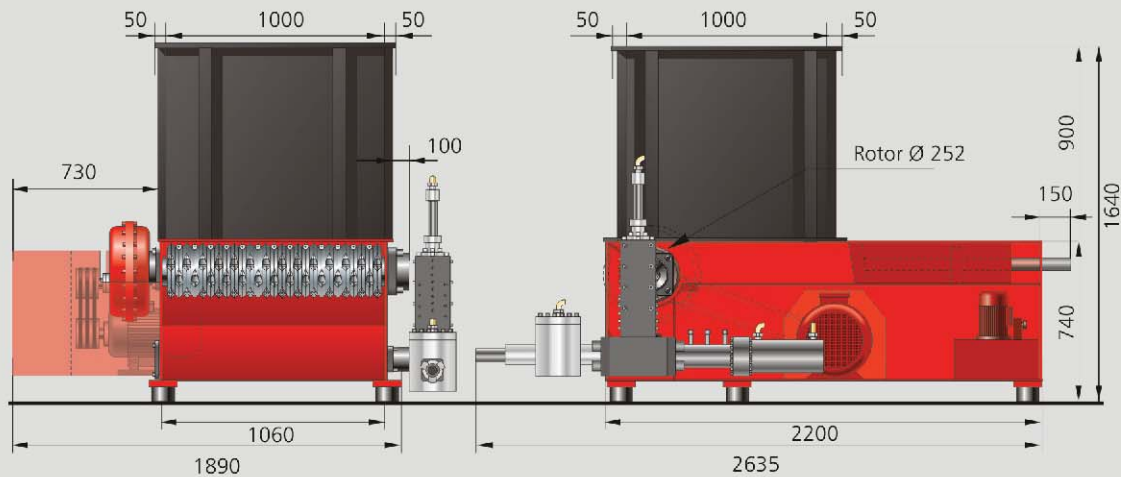
Programmable Logic Controller



Screen basket

clever shredding + briquetting

WTH 600/1000



Specifications	WTH 500/500	WTH 600/1000	WTH 800/1000
Briquette diameter (mm)	50	60	80
Throughput (kg/h)	70 - 100*	90 - 120*	150 - 200*
Hydraulic-Oil quantity (l)	100	160	250
Hydraulic motor (kW)	7,5	7,5	11
Feed opening (mm)	500 x 745	1000 x 1000	1000 x 745
Rotor-Ø (mm)	180	252	180
Rotor length (mm)	500	1000	1000
Rotor speed (RpM)	100	100	100
Motor performance (kW)	9,2	15	15
Number of knives (pcs.)	16 / 28	27	27
Weight (approx. kg)	1.600	2.100	2.400

* The throughput rate depends on the material being processed.

Equipment

Press

- High performance compaction mechanics with wear-resistant, chrome-plated tongs
- Pre-compressor with end position cushioning cylinder and threaded cap
- Hardened compression chamber wearing bushing to minimize wear
- PLC with diagnostic program

Hydraulics

- Separate oil tank with pump motor and valve control
- Safety cutoff switch for oil temperature

Accessories (optional)

- Briquette length monitoring
- Oil cooling for continuous operation
- Catch basin for lubricant

Single-shaft shredder

- Discharge screw conveyor and geared motor
- Throughput depends on material and compaction performance
- Screen hole diameter 20 - 30 mm
- Compact design
- Switch box with PLC

Special designs upon request.

Demonstrations and tests with your material can be arranged upon request in our testing facility

WEIMA Maschinenbau GmbH

Bustadt 6-10

74360 Ilsfeld (Germany)

Phone: +49-(0)7062-9570-0

Fax: +49-(0)7062-9570-92

info@weima.com

www.weima.com

Sales Offices in

Austria, Ternberg

United Kingdom, Kent

France, La Ferté s/s Jouarre

Poland, Warsaw

USA, Fort Mill, SC

